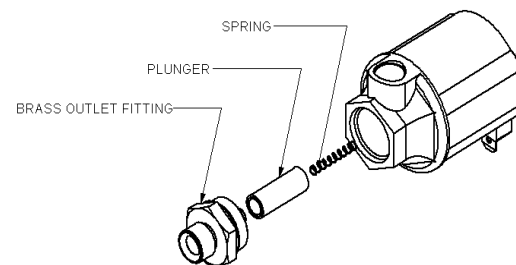


INSTALLATION INSTRUCTIONS FOR HORN KITS

SOLENOID CLEANING PROCEDURE

1. Drain all air from tank. (Compressor to be turned OFF to prevent it from running due to pressure drops in the air tank).
2. Using 1/2" wrench, disconnect horn air line from solenoid by loosening 1/2" compression nut.
3. Using 3/4" wrench, loosen and remove brass outlet fitting that the air line was attached to. Removal of this fitting allows access to inside chamber of solenoid valve.
4. Slowly remove plunger and spring from inside of valve to permit cleaning.
5. Inspect metal surface of plunger and plunger housing for corrosion build-up and remove with 1000 grit wet/dry sand paper, steel wool, emery board, or similar product. After thoroughly cleaning plunger surface and plunger housing surface, inspect rubber tip. Tip should be relatively smooth to allow proper seating against the brass outlet fitting.
6. After cleaning and inspecting the plunger and plunger housing, reassemble the solenoid. Place the spring back into the hole in the plunger and re-insert plunger (Spring end first) into the solenoid. To check for proper placement, simply depress plunger with fingertip. Plunger should travel in and out the plunger housing smoothly. (Lubricate grease may be using to lubricate the spring).
7. Place brass outlet fitting back into position and tighten with 3/4" wrench.
8. Re-attach air line to the outlet of the solenoid and tighten compression nut.
9. Procedure is now complete. Next turn ON compressor and allow air tank to re-fill and your system will be back in full operation.
10. This procedure may have to be performed several times per year depending on horn use, climate, and/or horn mounting location.
11. If plunger and spring are not reusable, a replacement kit is available. Hadley part number is HPB550B



All Hadley products carry a limited warranty for 12 months from date of purchase. We will repair or replace, at our option, defects in material and workmanship during that period when product and proof of purchase are returned to our service department at the address below.

HADLEY®

YOUR VEHICLE. YOUR COMPANY. YOUR SUCCESS.

www.hadleyadvantage.com

Hadley
Attn: Service Department
2851 Prairie SW
Grandville, MI 49418

Service Department: (616) 249-8462
Main: (616) 530-1717
Fax: (616) 530-3283

IMPORTANT: REVIEW ALL INSTRUCTIONS, PARTS LISTS, & INSTALLATION DIAGRAMS BEFORE STARTING INSTALLATION

HORN ASSEMBLY

1. For best results, mount horns in an unobstructed opening for sound to carry straight ahead. If possible mount horn with slight downward angle to allow moisture to drain out.
2. For roof mount installation: If vehicle is equipped with interior roof trim panel, remove to install horns.
3. Drill (1) 1/2 in. and (2) 5/16 in. holes (use mounting pad for template, item# 3) in position desired for horn.
4. Place mounting pad between base of horn and top of vehicle roof.
5. Place tensions washer (item# 4) on mounting elbow (item# 7) as shown in Group I, next thread the elbow into the base of the horn from under the roof. Insert (2) screws (item# 1) through hole of horn base and roof, attach lock washer (item#5) and hex nut (item# 6). Connect nylon tubing (item# 10) to mounting elbow using brass insert (item# 8) and compression nut (item# 9). Then run tube down to tank location and replace interior roof trim panel.
6. For projector support installation: Slide the projector support (item# 12) toward the horn bell until grommet (item# 11) firmly contacts with horn projector body. Drill (2) 5/16 in holes (use mounting gasket for template, item# 13). Place gasket between projector support base and top of mounting surface. Insert (2) screws (item# 1) through hole of projector support base and mounting surface, attach lock washer (item # 5) and hex nut (item# 6). (See Group I for sample installation).

TANK ASSEMBLY

1. Select mounting location for air tank (item# 25) keeping in mind the orientation of the tank and visibility of the pressure gauge (item# 21). Use thread sealant on all uncoated pipe threads components. (See Group II for sample installation)
2. Thread 2 brass fittings (item# 16) and check valve (item# 20) into brass cross (item# 18), then install the brass fitting into either one of the air tank outlet (item# 25). Next thread the solenoid threaded inlet (item# 15) into the brass fitting (item# 16). Thread the tire valve (item# 17) into remaining opening threaded hole in brass cross (item# 18). Connect nylon tubing (item# 10) to solenoid outlet using brass insert (item# 8) and compression nut (item# 9). (See group II for sample installation).
3. Thread brass tee fitting (item# 19) into the remaining tank outlet. Thread the pressure gauge (item# 21) and pressure switch (item# 22) into the tee.

CAUTION: Tighten pressure switch and pressure gauge on brass hex body only.

4. To mount tank drill (2) 11/32 in. diameter holes spaced 4 in. apart in a rigid surface. Insert tank studs through the holes and secure with locknuts (item# 26).

COMPRESSOR ASSEMBLY

1. As shown in group III, slide the (2) grommets (item# 31) into slots. Next push the (2) brass eyelets (item# 30) into the grommets. Pull the (4) bumpers (item# 33) through the (4) round holes on the bracket.
2. Clamp compressor head and install brass fitting (item#27) into air outlet as shown in group III.
3. Mount compressor on rigid support. Do not mount on fender well, firewall or other flexible material. Do locate compressor in area with good air flow and away from road surface to avoid excessive water and dirt conditions.
4. Mounting requires (2) holes spaced 2- 3/16 in. apart, each having a diameter of 7/32 in.
5. To mount compressor, insert #10-32 bolt (item# 29) through the brass eyelet and through the 7/32 in. hole. Secure with the #10-32 nut (item# 32) as shown in group III. **Do not over tighten mounting bolts.**
6. Connect nylon tubing from air outlet fitting (item# 27) to the check valve (item# 20) on the tank using brass inserts (item# 8) and compression nut (item# 9) as shown in Group II and Group III.

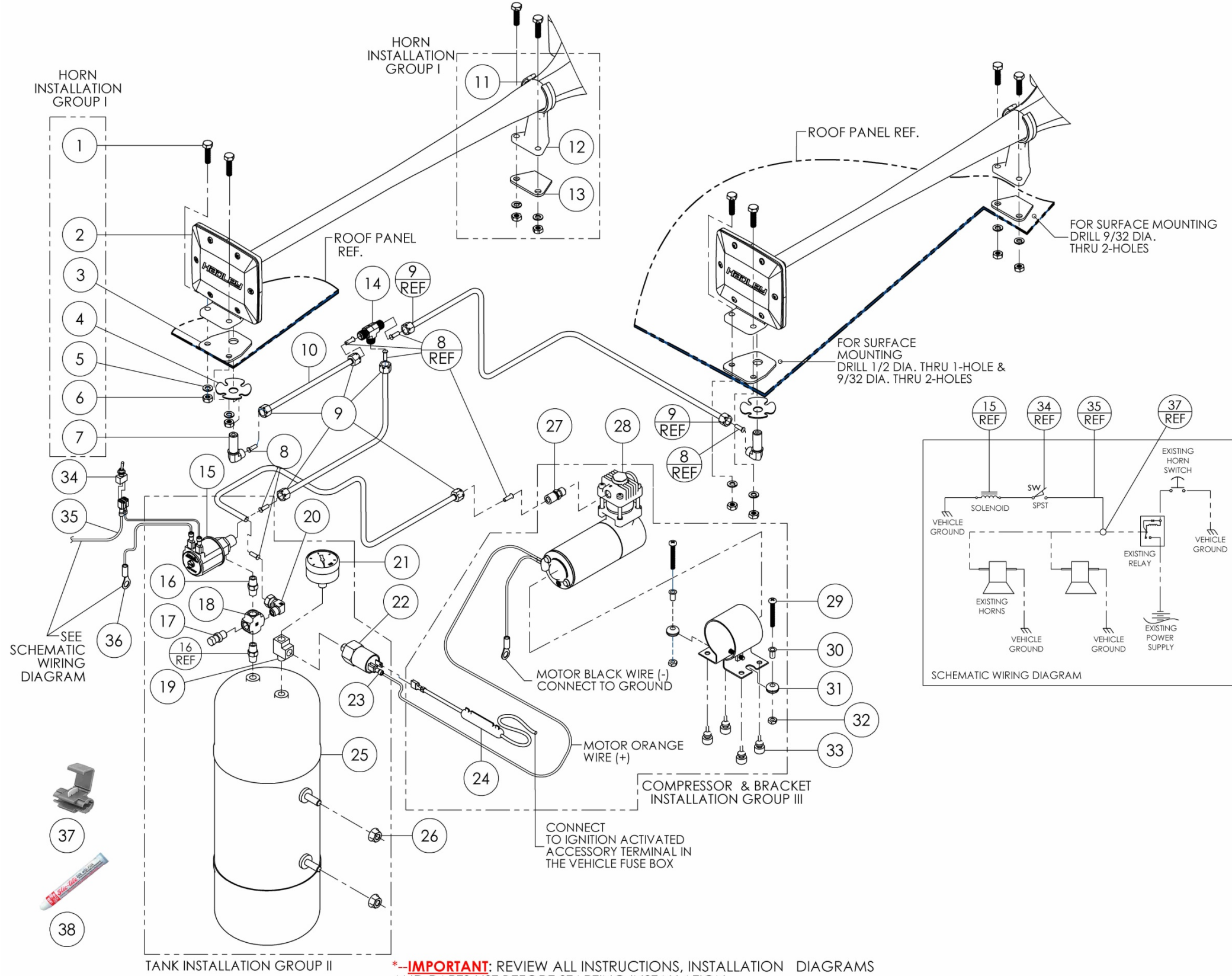
ELECTRICAL ASSEMBLY

1. As shown in group III connect orange (+) wire from compressor motor to either pressure switch terminal using ¼" receptacle terminal (item# 23). Next, connect fuse holder (item#24) to the other pressure switch terminal. Install other end of fuse holder to "ignition activated" accessory terminal in fuse panel. Attach motor's black wire (-) to vehicle ground.
2. As shown in schematic wiring mount toggle switch (item#34) on or under the dash in a location easily accessible to the driver. Connect wire (item#35) from vehicle ground to either solenoid terminal (item# 15). Connect other solenoid terminal to either terminal on the toggle switch. Connect remaining toggle switch terminal in line with the existing horn wire using a wire splice connector (item#37). With toggle switch in "off" position, only the vehicles electric horn will operate. With switch in "on" position, air horns and electric horn will be operated.

NOTE: Compressor starts automatically when pressure drops below 110 psi. If more than 4 minutes are required to pump tank to full pressure (110-135 psi) with engine running and compressor does not shut off, check all connections with soapy water or bubble solution for leaks. Use thread sealant on all uncoated pipe threads. Maximum cycle time 7 minutes with 30 minute cool down.

CAUTION: Check local noise abatement ordinances to avoid legal violations.

INSTALLATION INSTRUCTIONS FOR HORN KITS



PARTS LIST			
ITEM	PART No.	DESCRIPTION	QTY
1	H12801	1/4-20 UNC X 1" HEX BOLT	8
2	HORN	HORN	1
		HORN	1
3	H13727	HORN BODY GASKET	2
4	H11553	TENSION WASHER	2
5	H11306	LOCK WASHER	8
6	H11305	1/4-20 UNC HEX NUT	8
7	H11477	ELBOW FITTING	2
8	H12462	BRASS INSERT	8
9	H15522	COMPRESSION NUT	7
10	H1311020S	1/4" DIA. NYLON TUBING	1
11	H13725	PROJECTOR SUPPORT GROMMET	2
12	H13723	PROJECTOR SUPPORT	2
13	H13724	PROJECTOR SUPPORT GASKET	2
14	H12644	UNION TEE FITTING	1
15	H00550B	SOLENOID KIT (12VDC)	1
16	H11468	1/8-27 NPTF, BRASS FITTING	2
17	H12489	TIRE VALVE	1
18	H11830	1/8-27 NPTF, BRASS CROSS	1
19	H14654	1/8-27 NPTF, BRASS TEE FITTING	1
20	H15249	CHECK VALVE	1
21	H14212	PRESSURE GAUGE	1
22	H13940A	PRESSURE SWITCH	1
23	H14620	1/4" RECEPTACLE TERMINAL	5
24	H15235	FUSE HOLDER ASSEMBLY	1
25	H00751N	AIR TANK	1
26	H12737	5/16-18 UNC, LOCK NUT	2
27	H12553	COMPRESSION FITTING 7/16-24 & 1/8 NPT THREAD	1
28	HADLEY MODEL	COMPRESSOR-1/6 hp, 12 VDC	1
29	H14168	#10-32 UNF X 1.5" BOLT	2
30	H15224	EYELET	2
31	H15234	GROMMET	2
32	H15290	#10-32 UNF HEX NUT	2
33	H14572	BUMPER	4
34	H12949	TOGGLE SWITCH, ON/OFF, 20AMP; 1/4" TAB QUICK DISCONNECT TERMINALS	1
35	H12669-2	16 GA. WIRE	2
36	H14610	#10 RING TERMINAL NON INSULATED (18-14 GA.)	2
37	H13116	WIRE SPLICE CONNECTOR	2
38	H13943	PIPE THREAD SEALANT, (TUBE; REQ'D: 01)	1

***--IMPORTANT:** REVIEW ALL INSTRUCTIONS, INSTALLATION DIAGRAMS AND PARTS LIST BEFORE STARTING INSTALLATION